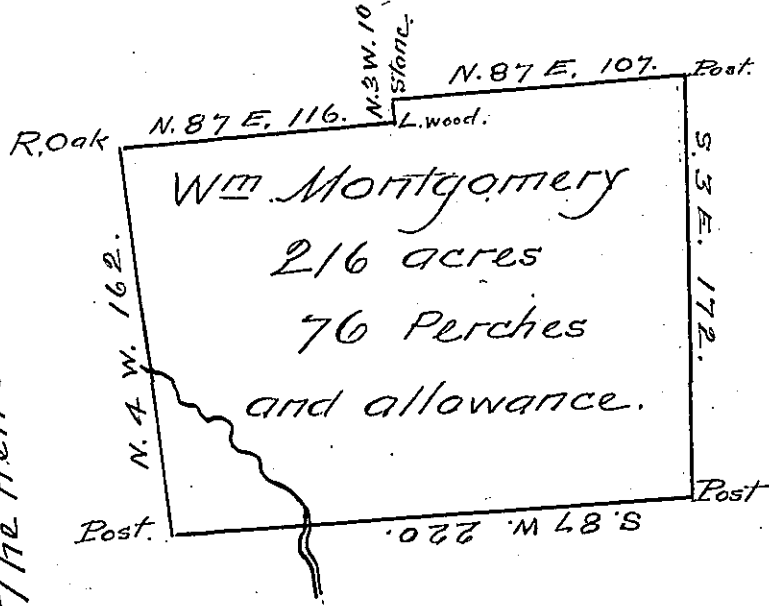


Thomas Montgomery
and John —

C157-70

The Heirs of John Richey



Thomas Montgomery.

C180 - 229

PHILLIP HOON.

C-101-50

A Draft of survey situate in Wolf Creek Town-
 ship Mercer County ~~County~~ Containing 216 acres
 76 perches and allowance Surveyed the 13th June
 1837 In pursuant of an actual Settlement made
 in 1800 and continued to this date by William
 Montgomery Jan^y. 11th. 1838.

B. Alexander D.S.

John Taylor Esq^r S. G.

IN TESTIMONY that the above is a copy of the original remaining on file in
 the Department of Internal Affairs of Pennsylvania, made
 conformably to an Act of Assembly approved the 16th day of
 February, 1833, I have hereunto set my Hand and caused
 the Seal of said Department to be affixed at Harrisburg,
 this Twenty seventh day of January 1906.

Isaac R. Brown
 Secretary of Internal Affairs.